

DISCOVERY OF A DWARF POSTSTARBURST GALAXY NEAR A HIGH COLUMN DENSITY LOCAL Ly α ABSORBER¹

JOHN T. STOCKE, BRIAN A. KEENEY, KEVIN M. MCLIN, AND JESSICA L. ROSENBERG

Center for Astrophysics and Space Astronomy, Department of Astrophysical and Planetary Sciences, Box 389, University of Colorado, Boulder, CO 80309; stocke@casa.colorado.edu, keeney@colorado.edu, jessica.rosenberg@colorado.edu

R. J. WEYMANN

Carnegie Observatories, 813 Santa Barbara Street, Pasadena, CA 91101; rjw@ociw.edu

AND

MARK L. GIROUX

Department of Physics and Astronomy, East Tennessee State University, Box 70652, Johnson City, TN 37614; giroux@polar.etsu.edu

Received 2003 October 20; accepted 2004 March 12

ABSTRACT

We report the discovery of a dwarf ($M_B = -13.9$) poststarburst galaxy coincident in recession velocity (within uncertainties) with the highest column density absorber ($N_{\text{H I}} = 10^{15.85} \text{ cm}^{-2}$ at $cz = 1586 \text{ km s}^{-1}$) in the 3C 273 sight line. This galaxy is by far the closest galaxy to this absorber, projected just $71 h_{70}^{-1} \text{ kpc}$ on the sky from the sight line. The mean properties of the stellar populations in this galaxy are consistent with a massive starburst $\approx 3.5 \text{ Gyr}$ ago, whose attendant supernovae, we argue, could have driven sufficient gas from this galaxy to explain the nearby absorber. Beyond its proximity on the sky and in recession velocity, the further evidence in favor of this conclusion includes both a match in the metallicities of absorber and galaxy and the fact that the absorber has an overabundance of Si/C, suggesting recent Type II supernova enrichment. Thus, this galaxy and its ejecta are in the expected intermediate stage in the fading dwarf evolutionary sequence envisioned by Babul & Rees to explain the abundance of faint blue galaxies at intermediate redshifts. While this one instance of a QSO metal-line absorber and a nearby dwarf galaxy is not proof of a trend, a similar dwarf galaxy would be too faint to be observed by galaxy surveys around more distant metal-line absorbers. Thus, we cannot exclude the possibility that dwarf galaxies are primarily responsible for weak ($N_{\text{H I}} = 10^{14} - 10^{17} \text{ cm}^{-2}$) metal-line absorption systems in general. If a large fraction of the dwarf galaxies expected to exist at high redshift had a similar history (i.e., they had a massive starburst that removed all or most of their gas), these galaxies could account for at least several hundred high- z metal-line absorbers along the line of sight to a high- z QSO. The volume-filling factor for this gas, however, would be less than 1%.

Subject headings: galaxies: dwarf — galaxies: starburst — intergalactic medium — quasars: absorption lines — ultraviolet: galaxies

1. INTRODUCTION

The relationship between Ly α absorbers and galaxies has been debated in the literature for many years (see, e.g., Bahcall et al. 1996; Arons 1972; Weymann et al. 1981; Bergeron & Boissé 1991; Lanzetta et al. 1995; Steidel 1998; Davé et al. 1999) and is the source of ongoing controversy (Mulchaey & Stocke 2002; see the recent volume *Extragalactic Gas at Low Redshift*). The two-point correlation function (TPCF) of absorbers is the only available datum on this relationship at $z \geq 1.6$ because at those redshifts even bright galaxies are hard to detect and study (although see Adelberger et al. 2003). The latest TPCF results continue to draw a distinction between the Ly α -only (i.e., apparently metal-free) absorbers and those that also contain metals (e.g., Womble et al. 1996; C IV $\lambda 1548$). While the metal-line systems show a significant excess power in the TPCF at low velocity differences, the Ly α -only absorbers show very little evidence for clustering in velocity (Rauch et al. 1992; Hu et al. 1995; Cristiani et al. 1997; i.e., only

a $3 \sigma - 4 \sigma$ excess at $\Delta cz \leq 200 \text{ km s}^{-1}$). A similar result is found at $z \sim 0$ for low column density Ly α absorbers by Penton et al. (2000b, hereafter Paper I; 2000a, hereafter Paper II; 2002, hereafter Paper III; 2004, hereafter Paper IV). This result is interpreted to mean that metal-line systems are related to galaxies (e.g., bound galactic disks, halos, or outflowing winds), while the Ly α -only absorbers are more uniformly distributed in space and may not be related to galaxies at all.

At high z , absorption lines of C IV and/or O VI are visible in individual absorption systems down to H I column densities of $N_{\text{H I}} \approx 10^{14.5} \text{ cm}^{-2}$ (Songaila & Cowie 1996; Telfer et al. 2002). In addition, on the basis of analysis techniques that use many very weak absorption systems in concert (e.g., Cowie & Songaila 1998; Ellison et al. 2000; Schaye et al. 2000; Telfer et al. 2002; Simcoe et al. 2004), metals may be present in a substantial fraction of the still lower column density systems. These TPCF and metal abundance results suggest but do not prove that even the uniformly distributed, lower column density Ly α absorbers could contain metals at a level of 10^{-3} solar (Schaye et al. 2003; Simcoe et al. 2004). If this inference is correct, a very early epoch of star formation may have “enriched” the intergalactic medium (IGM) more or less uniformly (but see Simcoe et al. 2004 for evidence against this conclusion).

¹ Based on observations made with the Apache Point 3.5 m telescope, operated by the Astronomical Research Consortium, and the 2.6 m du Pont telescope of the Las Campanas Observatory, operated by the Carnegie Institution of Washington, DC, and Pasadena, CA.

At the highest hydrogen column densities ($\geq 10^{17.3} \text{ cm}^{-2}$), the association between galaxies and absorbers is much clearer. Imaging and spectroscopy of strong Mg II metal-line systems at moderate z (Bergeron & Boissé 1991; Steidel 1995, 1998) have found strong evidence for the association of metal-bearing absorbers with luminous galaxies brighter than $\sim 0.1L^*$. In the Steidel (1995, 1998) survey of 55 Mg II absorbers, 53 have galaxies brighter than $\sim 0.1L^*$ within $50 h_{70}^{-1}$ kpc in projection. Since the high equivalent width Mg II systems are invariably optically thick at the H I Lyman limit, these systems must include both Lyman limit and damped Ly α absorption systems. The two absorbers in the Steidel (1995) sample lacking “associated” bright galaxies are damped systems (Steidel et al. 1997), and it is now known that some low- z damped Ly α absorbers are associated with dwarf (Nestor et al. 2002) and even low surface brightness galaxies (LSBs; Bowen et al. 2001). A new blind H I 21 cm survey (Rosenberg & Schneider 2002) confirms that a very broad range of H I masses, and thus, optical and near-IR luminosity galaxies, contribute to the damped Ly α absorber population (Rosenberg & Schneider 2003). These observations are strongly suggestive that strong Mg II/Lyman limit absorbers are due to metal-rich gas in bound halos of brighter galaxies ($\geq 0.1L^*$), while damped absorbers are due to metal-rich gas in disks of galaxies of all descriptions and luminosities.

Weaker ($N_{\text{H I}} \leq 10^{17} \text{ cm}^{-2}$) low-ionization (Mg II and Fe II) and high-ionization (C IV, Si IV, and O VI) metal-line absorbers are more numerous and poorly understood (see, e.g., Lanzetta et al. 1995; Charlton et al. 2002; Chen & Prochaska 2000). One might speculate that these weaker and higher ionization absorbers are the more diffuse, outer regions of bound halos or perhaps the halos or winds associated with less luminous galaxies than those found by the Steidel (1998) survey (see, e.g., Lanzetta et al. 1995). Particularly enigmatic are the low-ionization weak Mg II systems (Rigby et al. 2002). While there is little imaging and spectroscopy of these systems that might reveal “associated” galaxies, a photoionization model leads to surprisingly high densities and thus small sizes (≤ 1 kpc; Charlton et al. 2002; Tripp et al. 2002, hereafter T2002; Rosenberg et al. 2003), at least along the line of sight. Suggestions concerning the enigmatic nature of these very numerous low-ionization absorbers include extragalactic star-forming regions, cool clumps in bound galaxy halos similar to Galactic high-velocity clouds, and cool clumps in unbound galaxy winds. Regardless, if the extremely small inferred cloud depths are indicative of the overall sizes of these weak Mg II systems, they would be extremely numerous (greatly exceeding the number of bright galaxies) and difficult to understand in any context (Charlton et al. 2002).

Hubble Space Telescope (*HST*) ultraviolet spectroscopy stands to make an essential contribution to our understanding of the relationship between galaxies and the variety of absorbers described above because some of the *HST*-discovered absorbers are at sufficiently low redshift that their surroundings can be scrutinized for galaxies in great detail. Statistical evidence for the relationship between low- z absorbers and galaxies is based on two major *HST* spectroscopic surveys: (1) the *HST* QSO Absorption Line Key Project (Bahcall et al. 1993, 1996; Weymann et al. 1998; Jannuzi et al. 1998) used the Faint Object Spectrograph (FOS) to study high column density ($\log N_{\text{H I}} \geq 14 \text{ cm}^{-2}$) absorbers, and (2) Papers I–IV used the Goddard High-Resolution Spectrograph (GHRS) and the Space Telescope Imaging Spectrograph (STIS) to study lower column densities ($\log N_{\text{H I}} = 12.5\text{--}16 \text{ cm}^{-2}$) but over a shorter path

length ($\Delta z \sim 1$ compared with $\Delta z \sim 3.5$ at $z \leq 0.3$ for the Key Project spectroscopy). The ground-based galaxy survey work of Lanzetta et al. (1995) based on the FOS Key Project absorber sample finds that $\sim 30\%$ of these high column density absorbers can be identified with bright galaxies at impact parameters $\leq 160 h_{70}^{-1}$ kpc. Lanzetta et al. (1995) and Chen et al. (1998) extrapolate this result to conclude that all high equivalent width Ly α absorbers ($N_{\text{H I}} \geq 10^{14.5} \text{ cm}^{-2}$) can be identified as the very extended halos of galaxies, although most would be too faint to be detectable at the distance of the Key Project absorbers. On the other hand, investigations of the distribution of galaxies near lower column density ($N_{\text{H I}} \leq 10^{14.5} \text{ cm}^{-2}$) Ly α absorbers, first by Morris et al. (1993, hereafter M93), then by Paper III (see also Tripp et al. 1998; Impey et al. 1999) found little evidence for a close association between Ly α absorbers and galaxies, although there was some evidence for an association between most ($\sim 78\%$) Ly α absorbers and larger scale galaxy filamentary structures; the remaining 22% of these absorbers were found in galaxy “voids” (McLin et al. 2002; Paper III). These latter results have suggested to some investigators (including the current authors) that the proximity of high column density absorbers found by Lanzetta et al. (1995) is not a cause-and-effect relationship between the absorber and its nearest galaxy but rather is caused by both galaxies and absorbers being parts of the same large-scale structure filament. This conclusion is supported both by the theoretical N -body simulations (e.g., Davé et al. 1999) and by the nearest neighbor analysis of Paper III.

In an effort to utilize the most nearby Ly α absorbers to study the absorber-galaxy relationship, we have initiated a deep pencil beam galaxy survey around sight lines where very nearby ($cz \leq 10,000 \text{ km s}^{-1}$) Ly α absorbers have been found in the Penton et al. survey. This sample is ideal for studying the galaxies surrounding low column density Ly α -only absorbers and the weak metal-line absorbers because even very faint galaxies can be inventoried. For example, a first result from this survey (McLin et al. 2002) finds no galaxy close to several Ly α absorbers at $cz \leq 3000 \text{ km s}^{-1}$ in galaxy voids, in some cases with absolute magnitude limits as faint as $M_B = -12.5$. In this paper we report on a second specific result from our deep optical galaxy survey involving one of the nearest and strongest Ly α absorbers in the Penton et al. study: a low-ionization metal-bearing absorber at Virgo distance ($cz = 1586 \text{ km s}^{-1}$) along the 3C 273 sight line (Bahcall et al. 1991; Morris et al. 1991; Weymann et al. 1995; Sembach et al. 2001; T2002). While our overall survey results will be presented elsewhere (J. T. Stocke et al. 2004, in preparation), here we present the discovery of the closest galaxy-absorber association found by our survey, a dwarf poststarburst galaxy $71 h_{70}^{-1}$ kpc on the sky and $\Delta cz = 50 \pm 50 \text{ km s}^{-1}$ away from a high column density ($\log N_{\text{H I}} = 15.85 \text{ cm}^{-2}$) Ly α absorber. This one absorption system has more H I column density than all the other Ly α absorptions along this sight line, so it is at the very high end of the column density distribution of absorbers studied by our *HST* and galaxy surveys (Papers I–IV).

This absorber is very similar to the “weak Mg II” absorbers studied by Charlton et al. (2002), as described above. T2002 use photoionization models to infer a cloud thickness of 70 pc, quite comparable to the small line-of-sight extents inferred by Rigby et al. (2002) for weak Mg II systems. Thus, this absorber and its possibly related galaxy allow us to study weak metal-line absorption systems in close detail. In the next section we describe the previous work on this sight line and the nearby sight line of RX J1230.8+0115 with *HST*, as well as

ground-based optical and radio H I 21 cm galaxy survey work in this region. Section 3 describes the discovery and properties of this dwarf galaxy. Section 4 presents a discussion of these results in the context of other work, and § 5 summarizes our conclusions. As with the distances on the sky that we quote above, throughout this paper we quote distances obtained from redshifts, assuming a pure Hubble velocity field in this direction with $H_0 = 70 h_{70} \text{ km s}^{-1} \text{ Mpc}^{-1}$. Using the Local Supercluster velocity field model of Tonry et al. (2000) reduces distance values in this direction by 10%.

2. 1586 km s⁻¹ ABSORBER IN THE DIRECTION OF 3C 273

The 3C 273 sight line was the first to have intergalactic Ly α absorption detected locally using *HST* (Bahcall et al. 1991; Morris et al. 1991). It has been extensively studied since then (Weymann et al. 1998; Sembach et al. 2001; M93; Papers I–III) with particular attention to the Virgo Cluster Ly α absorbers at $cz = 1015$ and 1586 km s^{-1} . Higher signal-to-noise ratio *HST* GHRS observations showed that these two Ly α absorbers were remarkably well fitted by single Voigt profiles with line widths $b = 69$ and 72 km s^{-1} , respectively (Weymann et al. 1995). However, a subsequent far-UV spectrum of 3C 273 taken with the *Far Ultraviolet Spectroscopic Explorer (FUSE)* detected 2 and 6 higher order Lyman lines, respectively, in these two systems, requiring a substantial downward revision in the b -values to 32 and 16 km s^{-1} , respectively. The revised column density for the 1586 km s^{-1} absorber is now $\log N_{\text{H I}} = 15.85 \pm 0.1 \text{ cm}^{-2}$. A subsequent STIS echelle spectrum obtained by the STIS instrument team (Heap et al. 2002) detected low-ionization metal species in the 1586 km s^{-1} absorber (C II $\lambda 1335$, S II $\lambda 1250$, and Si $\lambda 1206$) and placed sensitive limits on the presence of higher ions, specifically C IV. In addition, we have used an archival GHRS medium-resolution spectrum to place a limit on the presence of Mg II $\lambda 2798$, 2803 in this absorber of $\leq 45 \text{ m}\text{\AA}$ (4σ). A photoionization analysis of this absorber by T2002 requires a surprisingly high density of $10^{-2.8} \text{ cm}^{-3}$, assuming a standard value for the extragalactic ionizing flux at $z \sim 0$ of $1.3 \times 10^{-23} \text{ erg s}^{-1} \text{ cm}^{-2} \text{ Hz}^{-1}$ (Shull et al. 1999). A metallicity of 6% solar and an overabundance of silicon relative to carbon of ~ 0.2 dex was found, which is strongly suggestive of supernova Type II enrichment of this gas. This led T2002 to speculate that this absorber was recently enriched by an outflowing supernova-driven wind. The low metallicity suggests either that the galaxy creating the wind has overall low metallicity or that the wind has swept up a large amount of metal-poor gas.

Another bright QSO, RX J1230.8+0115, is 0.9° away from 3C 273 on the sky ($355 h_{70}^{-1} \text{ kpc}$ at 1586 km s^{-1}) and also has *HST* UV spectroscopy available from GHRS and STIS observations (Rosenberg et al. 2003; Paper I). There is a particularly strong Ly α absorption line at 1666 km s^{-1} with an equivalent width of $389 \text{ m}\text{\AA}$, which is almost certainly a blend of two absorbers, both with $\log N_{\text{H I}} \approx 16.4 \text{ cm}^{-2}$, given the detection of close pairs of metal lines for a variety of species and ions (Rosenberg et al. 2003). In these cases, the line ratios demand a photoionization model, which also leads to small line-of-sight depths through these clouds of $\sim 20 \text{ kpc}$. The metal abundance of these clouds is consistent with being similar to the 1586 km s^{-1} absorber in 3C 273 but with large error bars due to a poorly determined hydrogen column density. The velocity difference between these two absorbers and the 1586 km s^{-1} 3C 273 absorber is small enough to suggest that these two absorbers are part of the same structure, which

would then be inferred to be $\geq 350 h_{70}^{-1} \text{ kpc}$ across the sky (Dinshaw et al. 1997). However, the coincidence of line pairs in velocity ($\Delta v \leq 150 \text{ km s}^{-1}$) in QSO spectra can be interpreted either as a physically “contiguous” structure or as a series of “correlated” structures stretching across these sight lines, e.g., metal-enriched gas from galaxies aligned along the same large-scale structure filament. In this case “correlated” structures are suggested by the much smaller line-of-sight sizes of these two clouds; that is, the 1666 km s^{-1} absorbers in the RX J1230.8+0115 sight line could be two other small clouds similar to the 1586 km s^{-1} absorber studied here but due to another galaxy aligned along the same large-scale structure filament.

The first systematic attempt to discover galaxies associated with the Ly α absorbers toward 3C 273 was conducted by M93, who used deep narrowband and broadband imaging in an attempt to detect faint galaxies that might be associated with Ly α clouds. They then performed follow-up multiobject spectroscopy on a “complete” sample of galaxies to $m_B \approx 19$ over an area extending 1° from the QSO in right ascension and $40'$ in declination. This corresponds to distances across the sky of ~ 390 and $260 h_{70}^{-1} \text{ kpc}$, respectively, at the distance to the absorbers in question. Although the galaxy studied herein is within this sky area and brighter than 19th magnitude, it was not observed by M93 because its image was classified as “merged” (S. Morris 2003, private communication). M93 found that, while the 3C 273 absorbers tended to be associated with groups or large-scale structures of galaxies, the Ly α absorbers did not cluster with galaxies nearly as strongly as galaxies clustered with each other. The M93 results are consistent with results obtained by other workers using other sight lines (Tripp et al. 1998; Impey et al. 1999; Paper III): there is no close relationship between galaxies and low column density Ly α absorbers. M93 did not find any new galaxies close to either of the two Virgo Cluster absorbers.

A summary of all known galaxies near these Virgo absorbers is given in Table 4 and Figure 7 of Paper III. For the 1586 km s^{-1} absorber there is no previously known galaxy closer than 250 kpc with $\Delta cz \leq 300 \text{ km s}^{-1}$, to which the absorber could be individually related. Paper III suggested an alternative model that includes all seven Virgo Ly α absorbers (two in 3C 273 and five in RX J1230.8+0115) and all eight known galaxies in this region in a single large-scale structure, which stretches diagonally across these two sight lines for $\geq 20 h_{70}^{-1} \text{ Mpc}$. Including the dwarf we report on here and a new galaxy discovered recently by the Sloan Digital Sky Survey (SDSS), there are now six known galaxies at $cz \approx 1600 \text{ km s}^{-1}$ within $1 h_{70}^{-1} \text{ Mpc}$ of the 3C 273 sight line. The presence of strong absorption systems in these two adjacent sight lines at nearly equal velocity and containing gas of similar metallicity is evidence in favor of a “large-scale structure” model for these absorbers.

3. DWARF GALAXY NEAR THE 3C 273 1586 km s⁻¹ ABSORBER

Over the past several years we have conducted a deep galaxy redshift survey in regions where low- z Ly α absorbers have been discovered with *HST*. We have used the du Pont 2.6 m telescope of the Las Campanas Observatory (LCO) in Chile and the 3.5 m WIYN telescope at Kitt Peak National Observatory (KPNO) in Arizona. The LCO observations were taken with the Wide-Field CCD multiobject metal slit mask spectrometer ($R \approx 2000$ for $4000\text{--}8000 \text{ \AA}$) designed and built by one of us (R. J. W.). A preliminary discussion of the

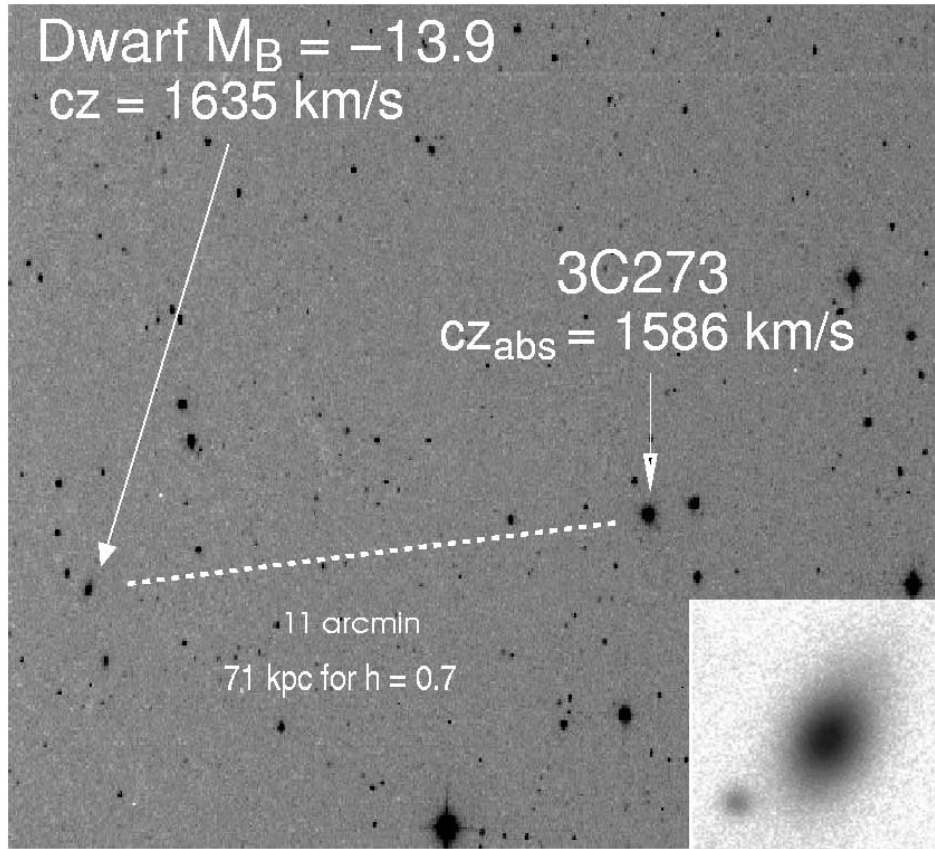


FIG. 1.—Digitized Sky Survey image of the region surrounding 3C 273 (north is up, and east is to the left). Both 3C 273 and the dwarf galaxy have been labeled, along with the heliocentric recession velocities of the dwarf galaxy and the Ly α absorber. The nearby QSO discussed in the text, RX J1230.8+0115, is located $0^{\circ}9'$ away from 3C 273 at P.A. = 149° . Inset: A $34''$ square R -band image of the dwarf galaxy taken with the ARC 3.5 m telescope at APO. The “companion” object to the southeast is either a foreground star or a globular cluster in the dwarf; it contributes negligibly to the total brightness of the system.

observing setups, data reduction, and analysis of both the LCO and WIYN data can be found in McLin et al. (2002). A more complete discussion of all sight lines observed will be presented later (J. T. Stocke et al. 2004, in preparation).

Here we present a summary of the results for the 3C 273 sight line, in which spectra for 79 galaxies were obtained using LCO slit masks, only 15 of which had previously been observed by M93. Our spectra of the 15 galaxies previously observed have confirmed the redshifts determined by M93 in all cases. Of the remaining 64, all but six were too faint to be selected by M93. Therefore, these new observations extend those of M93 1.5–2 mag fainter within $15'$ of the sight line.

We are confident now that all galaxies with $m_B \leq 19$ and $B \leq 24.2$ mag arcsec $^{-2}$ within $40'$ of 3C 273 have had redshifts determined. Our confidence is based primarily on the work of M93 and our realization that the small incompleteness of the M93 survey was due to a few misclassifications, which have now been rectified; i.e., all objects in this region have been classified by three different automated classification schemes (we have used both the SExtractor [Bertin & Arnouts 1996] and PPP [Yee 1991] image classification algorithms; see McLin et al. 2002). The magnitude completeness limit of $m_B \leq 19$ corresponds to $M_B \leq -12.8$ and -12.0 for the more distant and closer 3C 273 Virgo absorbers, respectively. Our new survey has extended the M93 work to include $\sim \frac{1}{3}$ of all galaxies with $m_B \leq 20.6$ within $15'$ of this sight line. Thus, this field has been extremely well surveyed for galaxies to limits comparable to Local Group dwarf spheroidal galaxies, and only one galaxy has been found close to the 1586 km s $^{-1}$ absorber.

This galaxy is shown in Figure 1; it is a dwarf with $m_B = 17.9 \pm 0.1$ lying $11'$ from the quasar sight line. At the Hubble flow distance to this galaxy, it has total absolute magnitude $M_B = -13.9 \pm 0.1$ ($0.004L^*$), and its angular separation from 3C 273 amounts to a projected distance from the sight line to the galaxy of only $71 h_{70}^{-1}$ kpc. This is the smallest impact parameter found in our entire survey. This galaxy was observed in two of the LCO masks, as well as in a follow-up long-slit spectrum obtained at the Apache Point Observatory (APO) 3.5 m telescope using the double-imaging spectrograph (DIS). The DIS spectrum has a spectral resolution of ~ 7 Å (500 km s $^{-1}$) covering the range 3600 – 9600 Å. The final redshift we adopt is based on the 3.5 m spectrum because our best LCO spectrum suffers from interference with zero-redshift night-sky absorption, since it was taken at quarter-moon. The velocity obtained from the APO spectrum agrees for the various absorption lines measured to within ± 50 km s $^{-1}$. The velocity determined for the galaxy is $cz = 1635 \pm 50$ km s $^{-1}$ (heliocentric). A redshift determined from the better of the two LCO spectra is 80 km s $^{-1}$ less than the above value. Therefore, the measured radial velocity of this galaxy overlaps the absorber velocity at the 1σ level. The better of the LCO spectra is shown in Figure 2.

The spectrum can be described as a “poststarburst” or E+A galaxy in that both absorption lines of an older or cooler stellar population and hydrogen absorption lines indicating a young A–F star population are present. No emission lines are visible in the spectrum to a limit of $W_\lambda < 0.6$ Å, including [O III] and H α (although not shown in Fig. 2, the wavelength of H α is

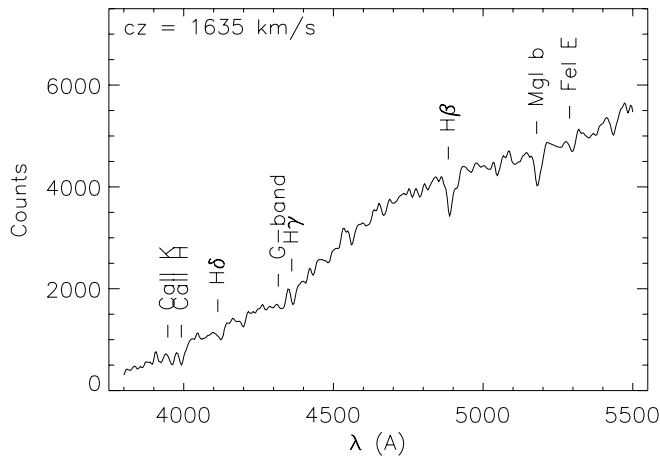


FIG. 2.—Spectrum of the dwarf galaxy with prominent absorption lines marked. We classify this galaxy as a poststarburst on the basis of the strength of the Balmer lines and lack of emission lines. This spectrum was obtained at the Carnegie Observatory's Las Campanas 2.6 m telescope. Line strengths were measured on an additional spectrum obtained at the ARC 3.5 m telescope at APO.

present in all three of our spectra). On the basis of deep B - and R -band images of this galaxy (see Fig. 1, *inset*) obtained at the APO 3.5 m telescope using the CCD imager SPICAM, this galaxy has a central surface brightness of $B = 21.8$ mag arcsec $^{-2}$, a disk scale length of $0.4 h_{70}^{-1}$ kpc, an overall color of $B-R = 1.3$, and isophotes of ellipticity 0.35 with no isophotal irregularities (no significant ellipticity changes or isophotal twists). The seeing during these observations was $1''.4$. As shown in Figure 3, the overall surface brightness profile is much better fitted with an exponential disk model than with an $r^{1/4}$ law. Thus, despite its elliptical appearance in Figure 1, this galaxy is a spiral and therefore, similar to Local Group dwarf spheroidal galaxies in their surface brightness profiles (e.g., Kormendy 1986). Indeed, this object's structural parameters fit nicely onto the dwarf spheroidal structural sequences shown in Kormendy (1986) and far from the elliptical galaxy

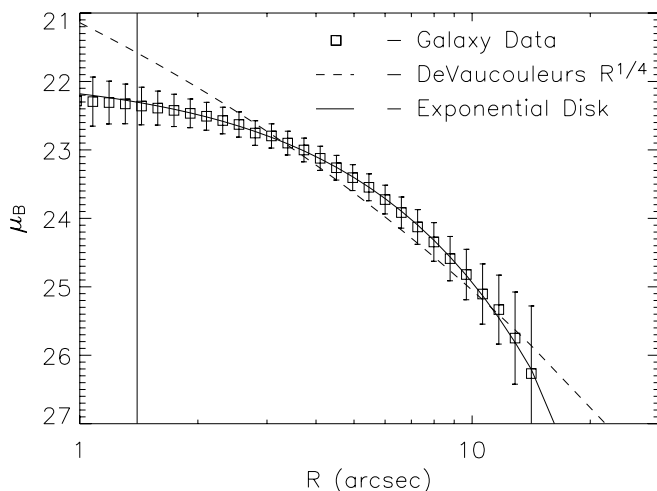


FIG. 3.—Surface brightness profile of the dwarf galaxy (*squares*) with de Vaucouleurs $R^{1/4}$ (*dashed line*) and exponential disk (*solid line*) models overlaid. Like dwarf spheroidal galaxies, this galaxy is less centrally concentrated than an elliptical galaxy. The vertical line indicates the seeing ($1''.4$) in the image from which the surface brightness distribution was derived. The small object (star or globular cluster?) just southeast of the dwarf in Fig. 1 has not been included in the surface brightness profile.

TABLE 1
MEASURED LICK INDICES AND EMISSION-LINE LIMITS

Lick Index Name	Measured Value in Dwarf
H δ _F	$1.9 \pm 0.7 \text{ \AA}$
H γ _F	$1.9 \pm 0.9 \text{ \AA}$
H β	$3.7 \pm 0.9 \text{ \AA}$
Mg ₂	$0.08 \pm 0.02 \text{ mag}$
Fe 5270.....	$1.2 \pm 0.8 \text{ \AA}$
Fe 5335.....	$1.2 \pm 0.7 \text{ \AA}$
$\langle \text{Fe} \rangle$	$1.2 \pm 0.5 \text{ \AA}$
Equivalent Width Limits	
[O II] λ 3727.....	$< 5 \text{ \AA}$
[O III] λ 5007.....	$< 0.6 \text{ \AA}$
H α	$< 0.6 \text{ \AA}$

sequences. Placing the core radius that we have measured for this galaxy on the dwarf spheroidal sequences in Kormendy (1986) suggests a velocity dispersion of $\sim 20 \text{ km s}^{-1}$. Unfortunately, our LCO and APO spectra were obtained at too low a spectral resolution to confirm this estimate. The evidence that this spiral has been entirely stripped of its gas and dust includes the absence of patchy absorption in the B -band image, the absence of H I 21 cm emission (van Gorkom et al. 1993; $M_{\text{H I}} \leq 5 \times 10^6 M_{\odot}$), and the absence of H α and [O II] line emission (Table 1). This is consistent with its classification as an E+A galaxy. Given its distance and apparent magnitude, the galaxy is a dwarf with an extrapolated total magnitude of $M_B = -13.9 \pm 0.1$.

Poststarburst or E+A galaxies are quite rare in the local universe. Zabludoff et al. (1996) found that only a very small percentage of galaxies in a large field galaxy survey could be described as poststarburst: 0.2%. However, in a more recent spectroscopic survey of the outskirts of several nearby very rich galaxy clusters, Caldwell & Rose (1997) found that 3%–12% of all cluster elliptical galaxies exhibit poststarburst spectra, although these statistics refer to galaxies considerably brighter than the one that we have found here. While Virgo is much less rich than the clusters studied by these authors, we might expect that a few percent of all early-type galaxies in the southern Virgo region would be poststarburst. Thus, an admittedly a posteriori probability that a poststarburst galaxy is the nearest galaxy to this absorber just by chance is $\sim 1\%$. Another a posteriori probability that supports a physical or causal relationship between this dwarf galaxy and the absorber is that, given that only six galaxies total are found in the M93 and current galaxy survey areas within $\pm 500 \text{ km s}^{-1}$ of the absorber, the probability that one of these would be found $\leq 70 \text{ kpc}$ from 3C 273 accidentally is less than 5%. So, even if the galaxy filament in this region of sky spans a velocity range of $\sim 1000 \text{ km s}^{-1}$, the likelihood is small that a galaxy in this filament would be found just by chance as close to 3C 273 as this dwarf.

The next nearest galaxies to the 3C 273 absorber are UGC 7642 ($cz = 1635 \text{ km s}^{-1}$ and $m_B = 15.3$), a star-forming dwarf irregular galaxy that is $252 h_{70}^{-1}$ kpc away on the sky, and UGC 7612 ($cz = 1575 \text{ km s}^{-1}$ and $m_B = 14.8$), an LSB dwarf Sm galaxy, which is $265 h_{70}^{-1}$ kpc away on the sky. Although these galaxies are ~ 10 times more luminous than the dwarf that we have found, they are also much farther away from the sight line. Indeed, as we show below, these galaxies have properties that, we believe, this newly discovered dwarf had

several Gyr ago. There are three other galaxies at comparable recession velocities 483, 743, and 791 h_{70}^{-1} kpc away, so there is some evidence for a filament of galaxies in this region at the absorber redshift. So, given that the next two nearest galaxies are at comparable distances from the absorber and that there is some evidence for a galaxy filament (see Paper III), the two alternative hypotheses for the origin of the 1586 km s^{-1} absorber are either that it is primarily due to the dwarf that we have found or that it is due to the cumulative effect of several nearby galaxies in this filament, including this dwarf.

The APO 3.5 m spectrum allows further investigation into the nature of the stellar population(s) in this dwarf. The equivalent widths and line strengths for some of the ‘‘Lick indices’’ (Worthey 1994) are shown in Table 1. We also list upper limits on the equivalent widths of the $\text{H}\alpha$, $[\text{O II}] \lambda 3727$, and $[\text{O III}] \lambda 5007$ emission lines. Although Figure 2 does not show the $\text{H}\alpha$ region, each of our three spectra covered that region, and $\text{H}\alpha$ was not detected in any of our data to sensitive limits. However, $\text{H}\alpha$ does appear to be detected in absorption in our spectrum with equivalent width of $\approx 3 \text{ \AA}$, so some weak emission that fills in some of the $\text{H}\alpha$ absorption line may be present. The strength of $\text{H}\delta$ (2 \AA) is large enough to suggest that a single massive starburst created the F stars that are seen in hydrogen absorption (e.g., Poggianti 2001; Kauffmann et al. 2003). However, an $\text{H}\delta$ equivalent width of this strength may also be produced from a more extended star formation history (see particularly Fig. 3 in Kauffmann et al. 2003, based on 10^5 galaxies from the SDSS). Therefore, while suggestive of a massive starburst, the Lick indices in Table 1 do not require it; while these values constrain the mean characteristics of the stellar population in this dwarf by comparing hydrogen with metal-line strengths, they do so regardless of the exact star formation history. Figure 4 shows the $\text{H}\beta$ versus Mg_2 and $\text{H}\delta$ versus $\langle \text{Fe} \rangle$ indices as defined by Poggianti (2001) quoting Worthey (1994) with a grid of mean population characteristics overplotted. Although the uncertainties are rather large, the two plots in Figure 4 together require a mean stellar metallicity of $-1.0 (\pm 0.5)$ dex solar and a mean stellar age of 3.5 ± 1.5 Gyr. If the light from this dwarf is dominated by a single massive starburst, these values represent the metallicity and the age of the starburst. If the recent star formation history of this dwarf has been more complicated (e.g., an older stellar population from previous star formation accounts for the metal lines), then the location of the Lick index measurements on the population grid in Figure 4 yields an upper limit on the time in the past when a less massive starburst occurred.

Multiple epochs of star formation found in many Local Group dwarf spheroidal galaxies (Mateo 1998) are indirect evidence in favor of the latter interpretation. These two possible histories of this dwarf can be discriminated by obtaining a near-UV image with *HST* STIS. If the luminosity of this galaxy is due primarily to a single starburst 3.5 Gyr ago, the near-UV flux should be quite faint, 2.5–3 mag fainter than the *B*-band flux. If a more extensive star formation history is correct, numerous blue horizontal branch stars will be present, making the near-UV flux substantially brighter (Brown et al. 1997; Tantaló et al. 1996). Since the evidence that some dwarf spheroidal galaxies have had star formation histories that include several star-forming episodes, a single massive starburst could be unusual. However, this galaxy is one of the few dwarf spheroidal galaxies known that is not close to a much more massive galaxy, whose tidal forces could have stimulated several star-forming episodes.

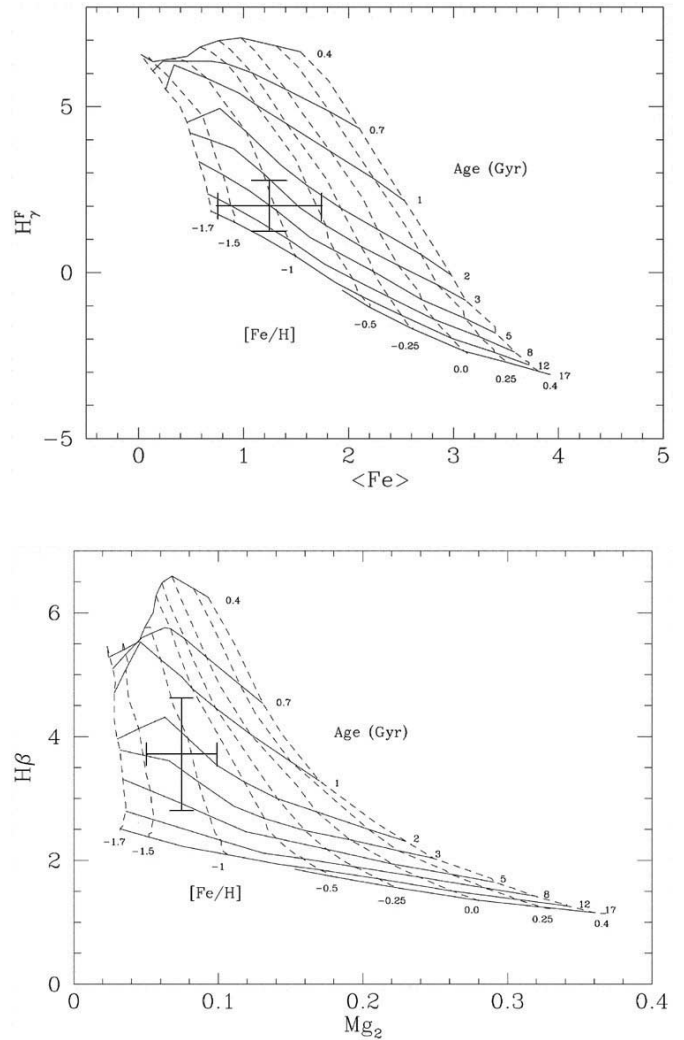


FIG. 4.—Plots of Lick indices based on the absorption strengths of $\text{H}\gamma$ and iron features at 5270 and 5335 \AA (top), and $\text{H}\beta$ and $\text{Mg } 1 b$ (bottom), overlaid with population synthesis models from Poggianti (2001). The data point for the dwarf galaxy is shown with error bars. We determine the mean stellar age to be 3.5 ± 1.5 Gyr and the mean metallicity to be $[\text{Fe}/\text{H}] \sim -1.0 \pm 0.5$ dex. This mean metallicity matches the metallicity of the $\text{Ly}\alpha$ absorber found by T2002. Figure courtesy of B. Poggianti.

4. DISCUSSION

4.1. Relationship between the 3C 273 Absorber and the Nearby Dwarf Galaxy

A summary of the important measured properties of the 3C 273 1586 km s^{-1} absorber and the poststarburst dwarf galaxy is shown in Table 2. These reference values include the observed column density ($N_{\text{H I}}$), and the density (n) and ionization parameter (U) from the photoionization model of T2002, as well as dwarf galaxy parameters from § 3 including the 3C 273 sight line impact parameter (b). Briefly, the correspondences, which strongly suggest a physical or causal relationship between this galaxy and the absorbing gas, are these:

1. The proximity on the sky and in recession velocity. Within the errors the absorber and galaxy redshifts match. The galaxy type is unusual if the absorber and galaxy are close just by chance.
2. Within rather large errors the metallicities of the galaxy and the absorber match.

TABLE 2
ABSORBER-GALAXY CONNECTIONS

3C 273 Absorber	Dwarf Galaxy
$cz = 1586 \pm 5 \text{ km s}^{-1}$	$cz = 1635 \pm 50 \text{ km s}^{-1}$
$\log N_{\text{H I}} = 15.85 \text{ cm}^{-2}$	$b = 71 \text{ h}_{70}^{-1} \text{ kpc}$
$\log n = -2.85 \text{ cm}^{-3}$	$m_B = 17.9 (M_B = -13.9)$
$\log U = -3.0$	$\log (L_B/L_\odot) = 7.8$
Shell thickness 70 pc.....	$B-R = 1.2$
$[\text{Fe}/\text{H}] = -1.2$	$M_{\text{H I}} < 3 \times 10^6 M_\odot$
$[\text{Si}/\text{C}] = 0.2$	$[\text{Fe}/\text{H}] = -1.1$
	Mean stellar age 2–5 Gyr

3. The supersolar $[\text{Si}/\text{C}]$ ratio in the absorber suggestive of recent supernova Type II enrichment and the evidence for a recent starburst in the dwarf (Balmer absorption but no emission lines) seem to link these two together causally.

While these comparisons are strongly suggestive, the metal enrichment of such a large region of the IGM by such a small galaxy may seem extreme and deserves more detailed scrutiny. First, while the evidence is inconclusive that this galaxy's stellar population is due to a single massive starburst ~ 3.5 Gyr ago, there is strong spectroscopic evidence for recent star formation and a current absence of H I (see Table 2). So, although the number of recent supernovae and the amount of gas expelled from this galaxy are not precisely known, nevertheless, there is indirect evidence that a supernova-driven wind did expel most of this galaxy's gas and dust into the IGM. The absence of photometric peculiarities in the surface brightness profile shown in Figures 1 and 3 argues against the gas being stripped by a recent interaction with another galaxy; nor is a nearby galaxy seen. And although this galaxy is on the southern outskirts of the Virgo Cluster, its distance, $3.3 \text{ h}_{70}^{-1} \text{ Mpc}$ away on the sky, places it well outside the region where ram pressure stripping by intracluster gas would be effective. The expected low escape velocity for this dwarf ($\leq 50 \text{ km s}^{-1}$; see below) makes gas ejection into the surrounding IGM seem more plausible than if this galaxy were much more massive. Indeed, the combination of a poststarburst dwarf and a plausibly associated Ly α absorber is among the strongest pieces of observational evidence showing that starburst-driven winds actually escape from galaxies (see, e.g., Martin 2003).

To pursue the dwarf galaxy wind scenario, for the moment we assume that the galaxy characteristics we see are due to a single massive starburst 3.5 Gyr ago. In this case, the absolute B magnitude of the dwarf is almost entirely due to main-sequence F stars, and the implied current luminosity of the starburst is nearly $\sim 10^8$ solar (i.e., the fading starburst accounts for virtually all the galaxy's observed B -band luminosity). The Bruzual and Charlot (1993) stellar synthesis models of instantaneous starbursts suggest that this dwarf would have been ≥ 10 times brighter in B band within the first 10^8 yr after the starburst (i.e., $M_B \approx -16.5$) and will fade to ~ 10 times fainter in the next few billion years (i.e., $M_B \approx -11.5$). This final luminosity and the dwarf's structural properties would then be similar to those observed for the Local Group dwarfs Sculptor, Leo I and II, and Sagittarius. The original H I content of the galaxy can be estimated on the basis of the galaxy's brightness during its starburst phase (its most detectable phase). From the results of a blind H I survey with the Arecibo dish, Rosenberg & Schneider (2002) find that galaxies with magnitudes comparable to this dwarf when it was bursting have a median $M_{\text{H I}} \approx 5 \times 10^8 M_\odot$, with an expected range of 10^8 – $10^9 M_\odot$ in H I. As the Rosenberg &

Schneider (2002) survey is an H I–selected galaxy survey, these numbers are biased toward higher H I masses, but an original H I content of a few times $10^8 M_\odot$ seems quite plausible for this dwarf. This is enough mass to account for the nearby 3C 273 absorber.

Assuming that the 1586 km s^{-1} absorber is part of a complete spherical shell surrounding this galaxy, it has a thickness and density inferred from the absorption-line data of 70 pc and $1.4 \times 10^{-3} \text{ cm}^{-3}$ (T2002), respectively, and a minimum radius of 70 kpc, given by the observed impact parameter (see Table 2). This geometry requires a total mass of $\sim 10^8 M_\odot$, which should be considered an upper limit to the mass that the galaxy must supply because the shell might not be entirely intact and the superwind from the galaxy may have swept up some ambient gas on its way out to the absorber location. Thus, if a large fraction of the H I in this galaxy were blown out by supernovae, it could account for the 3C 273 absorption that we see. Using a 70 kpc radius assumes that we are viewing the very edge of the shell toward 3C 273. This is a reasonable assumption since we see only one absorber, although a single absorber could also be produced by a larger shell of gas that has only a partial covering factor, requiring somewhat larger mean velocities.

In two other Penton et al. survey (Papers I and IV) sight lines (RX J1230.8+0115 and PG 1211+143), Ly α +metal-line absorbers with H I column density comparable to this one have at least two components (J. Tumlinson et al. 2004, in preparation; Rosenberg et al. 2003). By the current interpretation, pairs of lines are suggestive of sight lines that lie along a chord of the superwind's shell. The RX J1230.8+0115 absorber pair has an observed radial velocity difference of 36 km s^{-1} (Rosenberg et al. 2003). This radial velocity difference implies a similar outflow velocity to that required here assuming a spherical shell-like geometry. If the dwarf superwind hypothesis is correct, we would expect to find a small galaxy near the RX J1230.8+0115 1666 km s^{-1} absorbers, similar to the dwarf studied here. While a galaxy redshift survey is in progress near RX J1230.8+0115, we have not yet found a galaxy comparably close to RX J1230.8+0115.² In addition, even at the modest distances (for QSO absorbers) at which the two metal-line absorbers in PG 1211+143 are found ($cz \sim 14,000$ and $19,000 \text{ km s}^{-1}$), a dwarf galaxy like the present case would have $m_B > 22$, well below the sensitivity of current surveys (e.g., J. T. Stocke et al. 2004, in preparation). However, for each PG 1211+143 metal-line absorber, a more luminous galaxy is found projected $\sim 100 \text{ h}_{70}^{-1} \text{ kpc}$ at a comparable recession velocity (J. Tumlinson et al. 2004, in preparation). Thus, for the case of PG 1211+143 and for numerous other metal-line absorbers (including those at $z \sim 3$; Adelberger et al. 2003), the presence of luminous galaxies does not preclude and in fact is suggestive of the presence of fainter galaxies closer to the absorber, as we have found here.

Could this little galaxy's supernovae blow this amount of gas out of the galaxy to the location seen? Taking 3.5 ± 1.5 Gyr ago to be the time of the ejection of the gaseous shell, a mean space velocity of $\geq 20 \pm 10 \text{ km s}^{-1}$ is required to reach a radius of $\geq 70 \text{ h}_{70}^{-1} \text{ kpc}$. This velocity seems entirely plausible, if not

² While the nearest known galaxies to the RX J1230.8+0115 absorbers, A1228+0116 and NGC 4517A (Paper III), are 118 h_{70}^{-1} and $176 \text{ h}_{70}^{-1} \text{ kpc}$ away from the RX J1230.8+0115 sight line at 1666 km s^{-1} , they have large velocity differences ($+625$ and -560 km s^{-1}) from the absorber and so are not so obviously related to these absorbers as the dwarf discussed here is plausibly related to the 3C 273 absorber.

smaller than expected for such an outflow given the large gas velocities and temperatures seen close to the star-forming region (e.g., Martin 2003; Heckman 2001; Pettini et al. 2001). Given that the absorber and galaxy radial velocities match to within the errors, a modest outflow velocity of this order is entirely consistent with the observations. Were there enough supernovae in the starburst to create this outflow velocity? To estimate the number of supernovae in the starburst, we assume a mass in stars-to-light ratio of $M_{\text{str}}/L_B = 1-5$. We obtained these values from the Bruzual & Charlot (1993) instantaneous-burst model for 5% stellar metallicity at a time after the burst of 3.5 ± 1.5 Gyr. These mass-to-light ratios yield a stellar mass in the starburst of $(1-5) \times 10^8 M_\odot$. We would expect that the total dynamical mass of this galaxy is a few times higher (i.e., $M/L_B \approx 10$, comparable to the Local Group dwarf spheroidal galaxies; Mateo 1988). Assuming that mass follows light, the surface mass profile (Fig. 3) and ellipticity (0.35; § 3) yield an escape velocity of $\sim 50 \text{ km s}^{-1}$ at 1 disk scale length ($0.4 h_{70}^{-1}$ kpc). This is consistent with the estimate from different considerations above. If the starburst created $\geq 10^8 M_\odot$ of stars, a Salpeter initial mass function predicts $\geq 7 \times 10^5$ stars with greater than $8 M_\odot$, which then create supernovae. Assuming 10^{51} ergs of energy per supernova was converted to bulk kinetic energy at 3%–30% efficiency (Koo & McKee 1992a, 1992b; Cioffi & Shull 1991), there was $\geq 2 \times (10^{55}-10^{56})$ ergs available to produce a superwind. After overcoming the shallow potential well of this dwarf, this amount of energy is capable of accelerating several times $10^8 M_\odot$ of gas to a mean velocity of $20-30 \text{ km s}^{-1}$. Thus, if a single massive starburst created most of the stars we see in this galaxy today, the subsequent supernova explosions seem entirely capable of producing a superwind that could account for the 3C 273 absorber.

However, a starburst of $\sim 1 M_\odot \text{ yr}^{-1}$ for 10^8 yr is quite large among dwarfs (Martin 2003), and the star formation history of this dwarf may have been more complicated; i.e., the observed stellar population is a combination of a young starburst population and an older population(s) due to previous burst(s) or to a steadily declining star formation rate. A variety of more complicated star formation histories is observed for the Local Group dwarf elliptical and spheroidal galaxies (Mateo 1998). In this case, to satisfy the constraints provided by the Lick indices in Table 1, the most recent starburst must have been less massive and more recent than in the single-burst model above. Even if the most recent starburst in this dwarf was $\sim 0.3 M_\odot \text{ yr}^{-1}$ and 2 Gyr ago, it would still be capable of producing the required outflow. A smaller, more recent starburst than this would not be capable of accelerating the required $\sim 10^8 M_\odot$ of gas to $\geq 70 h_{70}^{-1}$ kpc in time to create the absorber we see. In the case of an $\sim 0.3 M_\odot \text{ yr}^{-1}$ starburst, the brightness of this dwarf while bursting would be 3–10 times brighter than what we see today but it would not fade significantly in the future, as its current brightness is already partially due to an older stellar population. In this case, the eventual endpoint of this system would be more similar to the dwarf elliptical NGC 185. Since we based our estimate of the original H I content of this dwarf ($M_{\text{H I}} = 5 \times 10^8 M_\odot$) on its luminosity while bursting, this estimate should be revised downward by a factor of a few if a more complicated star formation history is correct. However, this amount of gas is still sufficient to produce the 1586 km s^{-1} absorber, especially since some primordial gas may be swept up as the wind escapes into the IGM. While a more ancient starburst (>5 Gyr ago) could in principle account for this absorber as well, it would not be consistent with the Lick indices that we have

measured for this dwarf. In summary, as long as this dwarf galaxy had a significant ($\geq 0.3 M_\odot \text{ yr}^{-1}$ for $\sim 10^8 \text{ yr}$) starburst more than ~ 2 Gyr ago, it can plausibly account for the metal-line absorber in the 3C 273 sight line $70 h_{70}^{-1}$ kpc away. Such a starburst is strongly suggested but not unambiguously demanded by the Lick absorption-line indices and the absence of H I 21 cm and optical emission lines that we find for this dwarf.

As described in detail in Rosenberg et al. (2003), nature has provided us with two sight line probes through the $cz = 1500-1750 \text{ km s}^{-1}$ galaxy and gaseous filament in this region. RX J1230.8+0115 is $0.9 (355 h_{70}^{-1} \text{ kpc at } cz = 1600 \text{ km s}^{-1})$ away from 3C 273, and both sight lines possess $N_{\text{H I}} \approx 10^{16} \text{ cm}^{-2}$ Ly α absorbers at $cz \sim 1600 \text{ km s}^{-1}$ with quite similar properties, including metal abundance. This suggests that the covering factor of metal-enriched gas in this filament is approximately unity, which in turn requires a few (3–6) starburst galaxy outflows scattered through the filament to produce a high covering factor for metal-enriched gas. This is a reasonable number of dwarf galaxies in this region, since six dwarf galaxies are already known to be present. If a seventh dwarf galaxy is discovered within $\sim 100 h_{70}^{-1}$ kpc of the RX J1230.8+0115 sight line at $cz = 1600-1750 \text{ km s}^{-1}$, this discovery would solidify the dwarf starburst+superwind hypothesis for these absorbers. However, a deep (e.g., $m_B \leq 19$) galaxy survey in the RX J1230.8+0115 region has not yet been completed.

Also, this dwarf could be an example of a “fading blue dwarf” as envisioned by Babul & Rees (1992) to explain the large numbers of faint blue galaxies found in deep optical images (e.g., Tyson & Seitzer 1988). If no further star formation occurs in this dwarf, several Gyr from now this galaxy will fade to the brightness of a dwarf spheroidal galaxy, which it already resembles in its surface brightness distribution. This dwarf and its associated nearby absorption-line system are in the expected intermediate stage between a more luminous blue dwarf actively forming stars and the abundant dwarf spheroidal galaxies, which have no current star formation. The superwind scenario of Babul & Rees (1992) predicts just the type of association we have found between a fading dwarf and a QSO absorber. If we were able to view another dwarf with properties like this one had ~ 3.5 Gyr ago (and thus at an observed $z = 0.3-0.5$), it would have $m_B = 24-25$, the magnitudes and redshifts (see, e.g., Koo et al. 1995) at which the faint blue galaxies are becoming prominent in deep images.

4.2. QSO Absorption-Line Context

In this paper we have proposed that a starburst ~ 3.5 Gyr ago created an outflowing superwind that escaped from a dwarf galaxy and expanded ~ 100 kpc into the IGM, enriching the IGM in metals and energy and creating a Ly α +metal absorber that we observe in the UV spectrum of 3C 273. While this individual case may be unique, these circumstances could be much more general because the 3C 273 1586 km s^{-1} absorber is the closest example of an IGM metal-line system currently known. In addition, if this absorber were much more distant, the dwarf galaxy we propose as the source for the absorbing gas would be too faint to be observed by current galaxy surveys near QSO absorbers (e.g., M93; Paper III; J. T. Stocke et al. 2004, in preparation). Thus, the frequency of dwarfs near QSO metal-line absorbers is not known currently. Therefore, we now consider how frequently this circumstance *could* occur and thus how many QSO metal absorption-line systems *could* be attributed to starbursting dwarf galaxies.

This possibility has been explored theoretically by a number of authors (e.g., Mac Low & Ferrara 1999; Ferrara & Tolstoy 2000), who found that, while a complete “blow away” of gas from a dwarf was possible only if $M_{\text{H I}} < 10^7 M_{\odot}$, dwarfs could generate powerful winds with more than escape speed through the combined action of their supernovae. The models of Ferrara & Tolstoy (2000) predict that dwarf galaxies with $M_{\text{H I}} \approx 10^8 M_{\odot}$ are the dominant contributor of gas and metals from galaxies into the IGM. Significant observational evidence (Heckman 2001; Martin 2003) exists that there is little correlation between velocity or gas temperature measured for superwinds and galaxy luminosity, suggesting but not proving that dwarf superwinds escape but winds from more luminous galaxies do not. Ott et al. (2001) have studied a possible nearby example of this phenomenon, the dwarf galaxy Holmberg I in the nearby M81/82 group. So this hypothesis is supported both theoretically and observationally. Supernovae in more massive galaxies produce winds that do not escape but instead form “galactic fountains” (Ferrara & Tolstoy 2000). On the basis of these theoretical results and the present example, we suggest that the H I column density range in which dwarf superwinds may be the dominant source of metal-enriched gas is $10^{14} - 10^{17} \text{ cm}^{-2}$.

At higher column densities ($N_{\text{H I}} \geq 10^{17.3} \text{ cm}^{-2}$) ground-based observations (e.g., Bergeron & Boissé 1991; Steidel 1995, 1998) strongly suggest that $\text{Ly}\alpha$ +metal-line absorbers are due to bound halos of luminous galaxies. The standard schematic geometry (Steidel 1998), suggested by the number of strong Mg II /Lyman limit systems (~ 1 per unit redshift), has $N_{\text{H I}} \geq 10^{17.3} \text{ cm}^{-2}$ absorbers arising in $50 h_{70}^{-1} \text{ kpc}$ halos around bright galaxies; the small percentage of Ly limit systems that are also damped $\text{Ly}\alpha$ systems have numbers that are consistent with arising in significantly smaller regions that are the size of galaxy disks. The galaxy survey work of Steidel (1995, 1998) near these strong Mg II absorbers at $z < 1$ solidifies this picture, in that he finds luminous ($L > 0.1L^*$) galaxies close to the sight line at the redshift of the Mg II absorber in 53 of 55 cases (Steidel et al. 1997; the remaining two cases are both damped $\text{Ly}\alpha$ systems). The low- z work on damped systems by Turnshek et al. (2002), Bowen et al. (2001), and others has solidified the hypothesis that damped $\text{Ly}\alpha$ systems arise in the gaseous disks of galaxies of a wide variety of types (Bowen et al. 2001; Rosenberg & Schneider 2002; including LSBs and dwarfs). Thus, the two undetected galaxies associated with damped $\text{Ly}\alpha$ absorbers in Steidel’s survey are explicable on the basis of these more recent results; i.e., these are probably due to dwarfs or LSBs undetectable at intermediate redshifts. McLin et al. (1998; with details found in McLin 2002) showed that Steidel’s general galaxy survey result rules out dwarf galaxies being responsible for the Lyman limit systems that are not damped $\text{Ly}\alpha$ absorbers. This is because Steidel’s success rate of identifying luminous galaxies at the absorber redshift is much higher than would be expected if low-luminosity dwarfs contribute to forming these systems. Specifically, McLin et al. (1998) showed that for several plausible choices of faint-end slopes in the galaxy luminosity function, a gaseous dwarf halo with radius as extrapolated from the halo sizes found by Steidel (1998), i.e., $20 h_{70}^{-1} - 40 h_{70}^{-1} \text{ kpc}$, was inconsistent with always finding a bright galaxy associated with the absorber. McLin et al. (1998) concluded that the absence of strong Mg II systems near dwarfs could be understood if dwarfs could not retain large gaseous halos but instead developed unbound winds. While these winds are predicted to be quite extensive, they rapidly become optically thin at the Lyman limit

and therefore were unlikely to be strong Mg II /Lyman limit systems. From completely different considerations Mo & Miralda-Escudé (1996) also found that extensive gaseous halos were unlikely to surround dwarf galaxies. So, from the above observations and interpretations, we can understand the threshold at $L = 0.1L^*$ ($v_{\text{esc}} = 100 - 150 \text{ km s}^{-1}$) below which Steidel finds no galaxies associated with Lyman limit absorbers. We suggest that this limit is due to the galaxy gravitational potential above which supernova-driven superwinds do not escape from a galaxy but instead create a galactic fountain and so form an optically thick gaseous halo. A nearby example of a bound halo is the 3C 232/NGC 3067 absorption system, for which *HST* GHRS spectra verify the strong Mg II /Lyman limit system (Tumlinson et al. 1999), and an $\text{H I } 21 \text{ cm}$ emission image of the gas verifies that the QSO shines through the galaxy’s extended gaseous halo (Carilli & van Gorkom 1992). These results are consistent with the Mac Low & Ferrara (1999) and Ferrara & Tolstoy (2000) simulations.

While these results suggest that weaker metal-line systems might be due to the more tenuous, outer halos of luminous galaxies, these systems are much more numerous (Young et al. 1982; Steidel 1998), and luminous galaxies have not generally been found near these weaker absorbers (Rigby et al. 2002; although see Adelberger et al. 2003 as discussed below). The number of these weak metal-line systems is large and, if extrapolations made from current data are correct, may include the bulk, if not all, of the $\text{Ly}\alpha$ forest (Cowie & Songaila 1998; Schaye et al. 2000; Ellison et al. 2000). If only those C IV absorbers associated with $\text{Ly}\alpha$ absorption at $N_{\text{H I}} \geq 10^{15.5} \text{ cm}^{-2}$ are considered, their numbers are ~ 10 times greater than the strong Mg II absorbers and thus would require high covering factor halos of radius $100 h_{70}^{-1} \text{ kpc}$ around galaxies (Steidel 1998). More sensitive observations have found C IV associated with absorbers down to $N_{\text{H I}} \geq 10^{14.5} \text{ cm}^{-2}$, with suggestions that C IV (and O VI) absorptions persist to even lower column densities on the basis of pixel optical depth techniques using many lower column density absorbers (Cowie & Songaila 1998; Aguirre et al. 2002). The ensemble metallicity of these weak C IV and O VI absorbers is in the range 0.03%–0.3% solar (Schaye et al. 2003; Simcoe et al. 2004). To associate these even lower column density metal systems with bound halos seems untenable given their huge numbers, since current observations are consistent with a large fraction, if not the entire $\text{Ly}\alpha$ forest, having a metallicity $Z \geq 0.1\%$ solar. At $N_{\text{H I}} \leq 10^{14.5} \text{ cm}^{-2}$ current data are consistent either with a metallicity “floor” throughout the universe of 0.1% solar or with a mixture of metal-enriched and metal-free absorbers in the $\text{Ly}\alpha$ forest, with the fraction of metal-free absorbers increasing with decreasing hydrogen column density (Simcoe et al. 2004). Either way, any model for metal-line absorbers must account for $dN/dz \geq 100$. In principle, dwarf galaxy starburst superwinds could account for a number density this large, even assuming a “standard” Schechter (1976) faint-end slope of the local luminosity function of galaxies of $\alpha = -1.25$. Assuming that all dwarf spheroidal galaxies went through this starburst phase in the past and that all low-luminosity spiral galaxies, irregular galaxies, blue cluster dwarfs, etc., are capable of producing such winds, we integrate the luminosity function from $0.1L^*$ (above which galaxy halos are bound) to $0.001L^*$ (the luminosity of the Local Group dwarf spheroidal galaxies). Regardless of luminosity we assign a cross-sectional radius to the metal-enriched region of $75 h_{70}^{-1} \text{ kpc}$, on the basis of the dwarf galaxy/ $\text{Ly}\alpha$ absorber connection that we report in this paper. If each and every

low-luminosity galaxy produced a sphere of metal-enriched gas of high covering factor over a region of radius $75 h_{70}^{-1}$ kpc, this process could produce ~ 200 metal-line systems per unit redshift at $z = 2$ (N.B., the assumption made here of a constant cross-sectional area per galaxy regardless of luminosity differs from the standard assumption of an increasing halo size for more luminous galaxies, from which Steidel 1998 derives $\sim 100 h_{70}^{-1}$ kpc C iv halos for L^* galaxies). But there may have been even more small galaxies at high z than in the current epoch because these objects merged to create the higher luminosity galaxies of today. A conservative estimate of the number of these small objects is a factor of 3 times higher than the estimate above (Gnedin 2000; Ricotti et al. 2002; Mo & White 2002), so the number density of metal-line systems inferred to be produced in this way could be more than 500 per unit redshift. Thus, dwarf galaxy winds could, in principle, account for all metal-line absorbers down to $N_{\text{H I}} \gtrsim 10^{14} \text{ cm}^{-2}$ (see, e.g., Bechtold et al. 1994). Because these dwarfs fade as a natural part of their evolution as envisioned by Babul & Rees (1992), they would be very difficult to detect at all but the lowest redshifts. We note that these galaxies are remarkably similar to the Cheshire Cat galaxies presciently suggested by Salpeter (1993) and Charlton (1995) to be responsible for much of the Ly α forest.

The number of Ly α +metal-line absorbers produced by starburst winds could be even higher if more luminous galaxies also contribute to this process. While there is no compelling evidence for this at low z , at $z \sim 3$, Adelberger et al. (2003) find a very strong correlation between C iv absorbers and Lyman break galaxies (LBGs) that may be evidence of massive galaxies expelling gas into the IGM at early epochs (Pettini et al. 2001). However, the galaxy population represented by the LBGs is unclear; they may be galaxies with stellar masses comparable to L^* galaxies today or they may be dwarf galaxies undergoing intense bursts of star formation. Both of these models are possible given the observational constraints available. For example, Papovich et al. (2001) infer stellar masses lower than $0.1M^*$ for LBGs in the Hubble Deep Field, but Shapley et al. (2001) and Erb et al. (2003), using the Steidel et al. (1996b) LBG sample, infer significantly larger masses, up to the stellar mass expected for current L^* galaxies. In addition, the sizes of these star-forming regions are small, 2.5–5.2 kpc (Steidel et al. 1996a). However, both groups note that the presence or absence of an older stellar population is not well constrained by the available data, so these masses and sizes must be treated as lower limits for the galaxy as a whole. So, these LBGs can be either starbursting dwarfs that will assemble into larger galaxies at later epochs or the UV-luminous star-forming regions inside more massive galaxies already assembled at the epoch of observation. If the former is the case, then a consistent picture emerges for both high and low redshift in which dwarf galaxies are primarily responsible for enriching the IGM with metals. If the latter is the case, then the spread of metals at early epochs is due to galaxies of a wider range of masses than in the present epoch and the estimate of the number of QSO metal absorption-line systems made above is a lower limit.

Despite the huge number of metal-line systems that could be due to dwarf galaxy winds, these superwinds would not fill an appreciable fraction of the IGM. If the expansion speed associated with these outflows is similar to what we have found here, the volume-filling factor of these winds decreases with cosmic time; i.e., the superwind expansion speed is less than the Hubble expansion speed. Even if there were about 10

times more dwarfs at high z than now and they all produced starburst superwinds before merging into larger galaxies, the volume-filling factor of metal-enriched gas is less than 1%. This is consistent with numerical simulations of the spread of metals (Gnedin 1998) and suggests that the bulk of the Ly α forest is unenriched. While Gnedin (1998) and Aguirre et al. (2001) found that galaxy interactions could spread these metals a bit more widely, we would not expect that metals would be spread much farther than ~ 100 kpc from galaxies today unless there were a very large number of star formation sites spread very uniformly throughout the universe. Ly α absorbers in regions most remote from galaxies, those in galaxy voids (McLin et al. 2002; Paper III), are the best locations for testing this hypothesis. If early star formation were more widespread than is possible assuming that all dwarfs create superwinds, even “void absorbers” would contain metals at abundances comparable to the possible “floor” of metallicity suggested by the recent work on low column density absorbers at high z ($[Z] = -2.5$ solar; Cowie & Songaila 1998; but see Simcoe et al. 2004).

While the predicted number density of dwarf galaxy winds mentioned above suggests that virtually all C iv metal-line absorbers at high z could be due to this process, this certainly depends on the detectability of C iv absorption in dwarf wind outflows. Indeed, the 3C 273 1586 km s $^{-1}$ absorber does not contain detectable C iv absorption, being too dense for the current epoch ionizing background to produce significant amounts of triply ionized carbon (T2002). At $z \sim 2$ the ionizing background is ~ 100 times stronger, so an absorber of similar density would contain detectable C iv, because C iv/H i is at a maximum for $\log U = 0$ to -2 and thus for physical densities of $10^{-2.5} - 10^{-4.5} \text{ cm}^{-3}$ at $z \sim 2$. Thus, assuming comparable physical size scales for absorbers in dwarf winds at $z \sim 2$ to those at $z \sim 0$, C iv should be the dominant carbon species for absorbers with $N_{\text{H I}} = 10^{14} - 10^{16} \text{ cm}^{-2}$. So C iv should be the most observable metal line in high- z dwarf wind clumps that have already cooled sufficiently to be in photoionization equilibrium with the ionizing background at that epoch. Of course, C iv could also be produced by collisional ionization of these wind clumps with the IGM or with other pieces of the outflow. However, the cooling time at $T \sim 10^5$ K is very short and would be unlikely to create wind clumps that are often detectable in C iv or even in O vi. For collisionally ionized gas, one would expect the column of O vi to be larger than for C iv (Heckman et al. 2002) and so more detectable. Absorption systems in which both C iv (and other lower ion species) and O vi are detected are thought to be multiphase gas with both photo- and collisionally ionized gas present (Giroux et al. 1994).

Recent work on the so-called weak Mg ii absorbers by Churchill et al. (1999), Rigby et al. (2002), and Charlton et al. (2002) has led these authors to speculate along similar lines to those presented here. Like the 1586 km s $^{-1}$ absorber, standard photoionization models of many of the weak Mg ii systems yield absorber thicknesses of less than 1 kpc. For the 1586 km s $^{-1}$ absorber, a small size is also obtained and Mg ii absorption is also weak. Using the photoionization model of T2002 and a solar ratio of Mg to C, we would predict an equivalent width for Mg ii $\lambda 2798$ of 10–20 mÅ, less than the limit (45 mÅ) that we have derived from the available GHRS data (see § 2). Thus, the absorber studied here is a “local” example of a “weak Mg ii” absorber. Charlton et al. (2002) interpret the small sizes of weak Mg ii absorbers as indicative of their three-dimensional diameters, which require a huge number of these tiny spheres to create the substantial absorber numbers

seen. Here instead we have suggested a spherical geometry of an expanding shell, with a large cross section on the sky but with small thicknesses along the line of sight, as inferred from photoionization modeling. The substantial number of tiny spheres envisioned by Charlton et al. (2002), several hundreds to thousands per L^* galaxy, makes it difficult to imagine their origin except in some unknown population of objects. But an expanding supershell surrounding a fading dwarf galaxy could be viewed as tens to hundreds of individual filaments (or tiny spheres) as is commonly observed for individual supernova remnants in our own and nearby galaxies. Thus, we suggest that these two views are compatible and the differences largely semantic, so no novel population of objects is required to explain their numbers.

However, a substantial percentage (25%) of the weak Mg II absorber population have been found by Rigby et al. (2002) to have Fe abundances comparable to solar metallicity. This would be very unexpected for any absorber produced by outflowing winds from a dwarf galaxy, given both the low metallicity of stars and gas seen in dwarfs (e.g., Izotov et al. 1999; Izotov & Smeets 2002) and the substantial amount of even lower metallicity gas that an outflowing wind might be expected to sweep up in its progress through the IGM. If these high metallicities are correct, they argue for large numbers of undetected star-forming pockets outside galaxies and against the dwarf galaxy wind model proposed here. These as yet undetected star formation sites also would be the high- z sources of metals required to produce a universal “floor” of metallicity (see Aguirre et al. 2001). However, the method used by Rigby et al. (2002) to determine metallicity uses metal-line widths and the H I Ly α profile only. Without, for example, information about the higher order Lyman series absorption lines, this method may not be accurate. Recently, Shull et al. (2000) have used UV spectra of bright active galactic nuclei to show that the curve-of-growth method using the Lyman lines observed by *FUSE* obtains b -values that are a factor of 2 smaller in the mean than the b -values obtained from Ly α profile fitting alone. This difference leads to an upward correction in hydrogen column density and thus to a downward correction in metallicity. Because the 1586 km s $^{-1}$ absorber has seven detected Lyman lines (Sembach et al. 2001), the hydrogen column density derived by this method is quite secure. As a result, this absorber can provide a test of the accuracy of the Rigby et al. (2002) method for determining metallicities. Following their method, we began with the equivalent widths and b -values measured for well-detected metal lines (see T2002). We then constructed a grid of photoionization models, requiring that the models be compatible with all metal line ratios, widths, and limits. This procedure sets a limit on the temperature of the gas, which we can use to constrain the H I line width associated with the metal-bearing gas. Fixing the Ly α redshift and line width to the values required for the metal-bearing gas and allowing additional Ly α components, we then find the H I column density associated with the metals. Using this procedure on the metal line and Ly α data for the 1586 km s $^{-1}$ absorber yields $N_{\text{H I}} < 10^{15}$ cm $^{-2}$ and a metallicity more than 40% solar. This should be compared with the 6% obtained for this absorber by T2002. Thus, Rigby et al. would have inferred a much higher metallicity for the 1586 km s $^{-1}$ absorber by using their method.

Therefore, we assert that the metal abundances in the absorbers that Rigby et al. have studied are uncertain and may be substantially less than they calculate. If this is correct, the dwarf superwind hypothesis is an excellent fit to the various

types of weak Mg II systems they have studied. And there is no requirement for as yet unobserved very numerous small pockets of star formation well outside galaxies. The variations in observed species and ionization parameter seen in weak Mg II systems and other weak metal-line systems seem explicable given the possible variations in sight lines through supernova remnants, which might intercept cool filaments or hotter intrafilament regions or both. High-quality UV spectra of background sources viewed through Galactic supernova remnants are needed to test this hypothesis.

5. CONCLUSIONS

In this paper we have reported the discovery of a dwarf poststarburst galaxy 71 h_{70}^{-1} kpc away on the sky and at the same recession velocity to within the combined errors as the highest column density Ly α absorber in the 3C 273 UV spectrum obtained with *HST* and FOS, GHRS, and STIS. A detailed study of this absorber using a STIS E140M spectrum (Heap et al. 2002) in conjunction with *FUSE* observations of higher order Lyman lines (Sembach et al. 2001) has been made by T2002. On the basis of standard photoionization models, T2002 found a metallicity for this $N_{\text{H I}} = 10^{15.85}$ cm $^{-2}$ absorber of 6% solar, an absorber thickness along the line of sight of 70 pc, and an overabundance of Si to C of 0.2 dex relative to solar. Using Lick absorption-line indices measured from a ground-based spectrum of the nearby dwarf ($M_B = -14$) obtained at the APO 3.5 m telescope, we estimate that the galaxy’s stellar population has a mean age of 3.5 ± 1.5 Gyr and a mean metallicity of 3%–30% solar. Strong Balmer absorption (e.g., 2 Å equivalent width of H δ) and the absence of [O II] and H α emission, as well as the absence of H I 21 cm emission ($M_{\text{H I}} \leq 5 \times 10^6 M_{\odot}$), are strongly suggestive but cannot prove that this galaxy experienced a massive starburst ~ 3.5 Gyr ago, whose subsequent supernovae blew out all its remaining gas. Given this interpretation, the evidence for a direct connection between this small galaxy and the nearby Ly α absorber is quite convincing: approximate matches in recession velocity and metallicity, and a Si/C ratio in the absorber suggesting recent supernova Type II enrichment. Despite an extremely thorough search for faint galaxies near the 3C 273 sight line (M93; Rauch et al. 1996; van Gorkom et al. 1993; the present work), only this one dwarf has been found close to this absorber. The next nearest galaxies are two other dwarf galaxies $\approx 250 h_{70}^{-1}$ kpc away, so the only viable alternative picture for the 3C 273 absorber is gas produced by at least several nearby galaxies, including this dwarf.

Optical (B and R) images of this dwarf obtained at the APO 3.5 m telescope show that, despite the galaxy’s elliptical appearance, its surface brightness profile is much better fitted by an exponential disk with scale length 0.4 h_{70}^{-1} kpc and no optical peculiarities in the B -band image that would indicate the presence of dust. If a massive starburst did occur in this galaxy ~ 3.5 Gyr ago, the Type II supernovae would have had sufficient energy to accelerate several times $10^8 M_{\odot}$ of H I to the speeds necessary to reach a 70 h_{70}^{-1} kpc radius by now. Thus, although we cannot prove beyond all doubt that the atoms producing the absorber came from this dwarf galaxy because of a massive starburst superwind, this seems to be the most logical conclusion. Also, since spectral synthesis models of the evolving stellar population of starbursts (Bruzual & Charlot 1993) suggest that this galaxy was ~ 10 times brighter in B band during its starburst phase and will fade 10 times more in the next few Gyr, this galaxy is an example of the intermediate stage in the evolutionary process that Babul &

Rees (1992) suggest begins as a blue starbursting dwarf galaxy and ends as a dormant dwarf spheroidal galaxy.

The primary uncertainty in this proposed scenario is that this galaxy experienced a single massive starburst ~ 3.5 Gyr ago, which accounts for its current luminosity and stellar properties. A starburst of this magnitude in a dwarf galaxy (requiring $1 M_{\odot} \text{ yr}^{-1}$ for 10^8 yr; Martin 2003) is unexpectedly large. Further, the indirect evidence from observations of the stellar populations of Local Group dwarf spheroidal galaxies is that low-luminosity galaxies typically experience several epochs of star formation (Mateo 1998). However, even in the case that the starburst that took place in this galaxy accounts for only $\sim 30\%$ of all its stars and occurred as recently as 2 Gyr ago, a supernova-driven wind can still account for the observed properties and location of the 1586 km s^{-1} absorber toward 3C 273. A near-UV image of this dwarf galaxy could determine whether the massive single-starburst model is correct. Bruzual & Charlot (1993) models of instantaneous starbursts have little mid-UV flux more than 1 Gyr after the starburst, fading from 6 to 20 times less flux than at B band between 1 and 4 Gyr after the starburst. However, stellar synthesis models with several star formation epochs or continuous star formation have sufficient blue horizontal branch stars so the mid-UV flux never gets this low compared with the B band (Tantalo et al. 1996; see, e.g., Brown et al. 1997 on the UV upturn in elliptical galaxies, which has an onset of ≥ 7 Gyr after a starburst).

While the association of this dwarf galaxy with a $\text{Ly}\alpha$ +metal-line absorption system is interesting as an individual example of a Cheshire Cat galaxy (Salpeter 1993; Charlton 1995), it also may be indicative of a large population of starbursting dwarf galaxies, whose supernovae can drive gas away from these dwarfs because of their shallow gravitational potential wells (Mac Low & Ferrara 1999; Ferrara & Tolstoy 2000). We are currently searching for a faint galaxy near the RX J1230.8+0115 sight line that could be responsible for a very similar pair of metal-line absorbers at 1666 km s^{-1} , $\sim 350 h_{70}^{-1}$ kpc away on the sky from the 1586 km s^{-1} absorber in 3C 273. If a dwarf galaxy is present near RX J1230.8+0115, this will provide further proof in favor of the dwarf starburst superwind model for these absorbers. All other known metal-line systems are too far away ($cz \geq 3000$) to allow dwarfs similar to this one to be observed by current surveys for galaxies near QSO absorbers (i.e., at $m_B > 19$; M93). Therefore, metal-line absorbers would be identified with more luminous galaxies at

greater impact parameters (e.g., Chen et al. 2001; Adelberger et al. 2003), which happen to be in the same galaxy filament as a dwarf (or dwarfs) closer to the sight line.

We view the discovery of this dwarf close to a $\text{Ly}\alpha$ +metal-line absorption system as strong evidence in favor of the Babul & Rees (1992) scenario used to explain the large population of “faint blue galaxies” seen on deep optical images. The large numbers of faint blue galaxies plus the theoretical expectations of standard hierarchical pictures of galaxy formation strongly suggest that there were many more of these dwarf galaxies in the past than now. If most of these dwarfs went through a violent starburst phase, dwarf starburst superwinds could be responsible for $dN/dz \gtrsim 500$ $\text{Ly}\alpha$ +metal-line absorption systems in the spectra of high- z QSOs. This estimate is based on the assumption that all dwarf galaxies produce a $75 h_{70}^{-1}$ kpc radius shell of metal-enriched gas around them before they merge to form larger galaxies. Evidence from other work (e.g., Bergeron & Boissé 1991; Steidel 1995, 1998) is that larger galaxies ($L > 0.1L^*$) form bound halos of denser gas and may not contribute significantly to the spread of metals into the IGM. But even if all dwarfs produce massive starburst superwinds, less than 1% of the IGM would become enriched in metals, leaving most of the $\text{Ly}\alpha$ forest absorbers metal-free at the lowest column densities. This conclusion can be tested by determining whether $\text{Ly}\alpha$ absorbers in galaxy voids (e.g., McLin et al. 2002) contain metals at a level $\geq 0.3\%$ solar.

We thank Erica Ellingson and the APO 3.5 m telescope observing specialists for assistance in obtaining the dwarf galaxy spectrum. We thank Carnegie Observatories for their support of the wide-field CCD multiobject spectroscopy system and the WIYN queue observers for their excellent observing support. We thank Bianca Poggianti for the use of her figure from a previous publication, Yeong-Shang Loh for accessing the public Sloan Digital Sky Survey database to provide information for us on the galaxies near the 3C 273 sight line, and Simon Morris for helpful discussions of his galaxy survey work near 3C 273. J. T. S., K. M. M., B. A. K., and J. L. R. acknowledge support from NASA *HST* General Observer grants GO-06593.01-A, GO-08182.01-A, and GO-09506.01-A and archival research grant AR-09221.01-A. J. L. R. also acknowledges support from an NSF Astronomy and Astrophysics Postdoctoral Fellowship, AST 03-02049.

REFERENCES

- Adelberger, K., Steidel, C. C., Shapley, A. E., & Pettini, M. 2003, *ApJ*, 584, 45
Aguirre, A., Hernquist, L., Schaye, J., Katz, N., Weinberg, D. H., & Gardner, J. 2001, *ApJ*, 561, 521
Aguirre, A., Schaye, J., & Theuns, T. 2002, *ApJ*, 576, 1
Arons, J. 1972, *ApJ*, 172, 553
Babul, A., & Rees, M. J. 1992, *MNRAS*, 255, 346
Bahcall, J. N., Jannuzi, B. T., Schneider, B. P., Hartig, G. F., Bohlin, R., & Junkkarinen, V. 1991, *ApJ*, 377, L5
Bahcall, J. N., et al. 1993, *ApJS*, 87, 1
———. 1996, *ApJ*, 457, 19
Bechtold, J., Crotts, A. P. S., Duncan, R. C., & Fang, Y. 1994, *ApJ*, 437, L83
Bergeron, J., & Boissé, P. 1991, *A&A*, 243, 344
Bertin, E., & Arnouts, S. 1996, *A&AS*, 117, 393
Bowen, D. V., Tripp, T. M., & Jenkins, E. B. 2001, *AJ*, 121, 1456
Brown, T. M., Ferguson, H. C., Davidsen, A. F., & Dorman, B. 1997, *ApJ*, 482, 685
Bruzual A. G., & Charlot, S. 1993, *ApJ*, 405, 538
Caldwell, N., & Rose, J. A. 1997, *AJ*, 113, 492
Carilli, C. L., & van Gorkom, J. H. 1992, *ApJ*, 399, 373
Charlton, J. C. 1995, in *QSO Absorption Lines*, ed. G. Meylan (Berlin: Springer), 405
Charlton, J. C., Churchill, C. W., Ding, J., Zonak, S., Bond, N., & Rigby, J. R. 2002, in *Extragalactic Gas at Low Redshift*, ed. J. Mulchaey & J. Stocke (San Francisco: ASP), 122
Chen, H.-W., Lanzetta, K. M., & Webb, J. K. 2001, *ApJ*, 556, 158
Chen, H.-W., Lanzetta, K. M., Webb, J. K., & Barcons, X. 1998, *ApJ*, 498, 77
Chen, H.-W., & Prochaska, J. X. 2000, *ApJ*, 543, L9
Churchill, C. W., Rigby, J. R., & Charlton, J. C. 1999, *ApJS*, 120, 51
Cioffi, D. F., & Shull, J. M. 1991, *ApJ*, 367, 96
Cowie, L. L., & Songaila, A. 1998, *Nature*, 394, 44
Cristiani, S., D’Odorico, S., D’Odorico, V., Fontana, A., Giallongo, E., & Savaglio, S. 1997, *MNRAS*, 285, 209
Davé, R., Hernquist, L., Katz, N., & Weinberg, D. 1999, *ApJ*, 511, 521
Dinshaw, N. D., Weymann, R. J., Impey, C. D., Foltz, C. B., Morris, S. L., & Ake, T. 1997, *ApJ*, 491, 45
Ellison, S. L., Songaila, A., Schaye, J., & Pettini, M. 2000, *AJ*, 120, 1175
Erb, D. K., Shapley, A. E., Steidel, C. C., Pettini, M., Adelberger, K. L., Hunt, M. P., Moorwood, A. F. M., & Cuby, J.-G. 2003, *ApJ*, 591, 101
Ferrara, A., & Tolstoy, E. 2000, *MNRAS*, 313, 291
Giroux, M. L., Sutherland, R. S., & Shull, J. M. 1994, *ApJ*, 435, L97
Gnedin, N. Y. 1998, *MNRAS*, 294, 407
———. 2000, *ApJ*, 535, 530

- Heap, S. R., Williger, G. M., Davé, R., Weymann, R. J., Jenkins, E. B., & Tripp, T. M. 2002, in *Extragalactic Gas at Low Redshift*, ed. J. Mulchaey & J. Stocke (San Francisco: ASP), 63
- Heckman, T. M. 2001, in *Gas and Galaxy Evolution*, ed. J. E. Hibbard, M. P. Rupen, & J. H. van Gorkom (San Francisco: ASP), 345
- Heckman, T. M., Norman, C. A., Strickland, D. K., & Sembach, K. R. 2002, *ApJ*, 577, 691
- Hu, E. M., Kim, T.-S., Cowie, L. L., Songaila, A., & Rauch, M. 1995, *AJ*, 110, 1526
- Impey, C. D., Petry, C. E., & Flint, K. P. 1999, *ApJ*, 524, 536
- Izotov, Y. I., Chaffee, F. H., Foltz, C. B., Green, R. F., Guseva, N. G., & Thuan, T. X. 1999, *ApJ*, 527, 757
- Jannuzi, B. T., et al. 1998, *ApJS*, 118, 1
- Kauffmann, G., et al. 2003, *MNRAS*, 341, 33
- Koo, B.-C., & McKee, C. F. 1992a, *ApJ*, 388, 93
- . 1992b, *ApJ*, 388, 103
- Koo, D. C., Guzman, R., Faber, S. M., Illingworth, G. D., Bershad, M. A., Kron, R. G., & Takamiya, M. 1995, *ApJ*, 440, L49
- Kormendy, J. 1986, in *Nearly Normal Galaxies*, ed. S. M. Faber (New York: Springer), 163
- Lanzetta, K. M., Bowen, D. V., Tytler, D., & Webb, J. K. 1995, *ApJ*, 442, 538
- Mac Low, M.-M., & Ferrara, A. 1999, *ApJ*, 513, 142
- Martin, C. L. 2003, in *The IGM/Galaxy Connection*, ed. J. Rosenberg & M. Putman (Dordrecht: Kluwer), 205
- Mateo, M. L. 1998, *ARA&A*, 36, 435
- McLin, K. M. 2002, Ph.D. thesis, Univ. Colorado
- McLin, K. M., Giroux, M. L., & Stocke, J. T. 1998, in *ASP Conf. Ser. 136, Galactic Halos*, ed. D. Zaritsky (San Francisco: ASP), 175
- McLin, K. M., Stocke, J. T., Weymann, R. J., Penton, S. V., & Shull, J. M. 2002, *ApJ*, 574, L115
- Mo, H. J., & Miralda-Escudé, J. 1996, *ApJ*, 469, 589
- Mo, H. J., & White, S. D. M. 2002, *MNRAS*, 336, 112
- Morris, S. L., Weymann, R. J., Dressler, A., McCarthy, P. J., Smith, B. A., Terrile, R. J., Giovanelli, R., & Irwin, M. 1993, *ApJ*, 419, 524 (M93)
- Morris, S. L., Weymann, R. J., Savage, B. D., & Gilliland, R. L. 1991, *ApJ*, 377, L21
- Mulchaey, J. S., & Stocke, J. T. 2002, *Extragalactic Gas at Low Redshift* (San Francisco: ASP)
- Nestor, D. B., Rao, S. M., Turnshek, D. A., Monier, E., Lane, W. M., & Bergeron, J. 2002, in *Extragalactic Gas at Low Redshift*, ed. J. Mulchaey & J. Stocke (San Francisco: ASP), 34
- Ott, J., Walter, F., Brinks, E., Van Dyk, S. D., Dirsch, B., & Klein, U. 2001, *AJ*, 122, 3070
- Papovich, C., Dickinson, M., & Ferguson, H. C. 2001, *ApJ*, 559, 620
- Penton, S. V., Shull, J. M., & Stocke, J. T. 2000a, *ApJ*, 544, 150 (Paper II)
- Penton, S. V., Stocke, J. T., & Shull, J. M. 2000b, *ApJS*, 130, 121 (Paper I)
- . 2002, *ApJ*, 565, 720 (Paper III)
- . 2004, *ApJS*, 152, 29 (Paper IV)
- Pettini, M., Shapley, A. E., Steidel, C. C., Cuby, J.-G., Dickinson, M., Moorwood, A. F. M., Adelberger, K. L., & Giavalisco, M. 2001, *ApJ*, 554, 981
- Poggianti, B. M. 2001, *ApJ*, 563, 118
- Rauch, M., Carswell, R. F., Chaffee, J. K., Foltz, C. B., Webb, J. K., Weymann, R., Bechtold, J., & Green, R. F. 1992, *ApJ*, 390, 387
- Rauch, M., Weymann, R. J., & Morris, S. L. 1996, *ApJ*, 458, 518
- Ricotti, M., Gnedin, N. Y., & Shull, J. M. 2002, *ApJ*, 575, 33
- Rigby, J. R., Charlton, J. C., & Churchill, C. W. 2002, *ApJ*, 565, 743
- Rosenberg, J. L., Ganguly, R., Giroux, M. L., & Stocke, J. T. 2003, *ApJ*, 591, 677
- Rosenberg, J. L., & Schneider, S. E. 2002, *ApJ*, 567, 247
- . 2003, *ApJ*, 585, 256
- Salpeter, E. E. 1993, *AJ*, 106, 1265
- Schaye, J., Aguirre, A., Kim, T.-S., Theuns, T., Rauch, M., & Sargent, W. L. W. 2003, *ApJ*, 596, 768
- Schaye, J., Rauch, M., Sargent, W. L. W., & Kim, T. 2000, *ApJ*, 541, L1
- Schechter, P. L. 1976, *ApJ*, 203, 297
- Sembach, K. R., Howk, J. C., Savage, B. D., Shull, J. M., & Oegerle, W. R. 2001, *ApJ*, 561, 573
- Shapley, A. E., Steidel, C. C., Adelberger, K. L., Dickinson, M., Giavalisco, M., & Pettini, M. 2001, *ApJ*, 562, 95
- Shull, J. M., Roberts, D., Giroux, M. L., Penton, S. V., & Fardal, M. A. 1999, *AJ*, 118, 1450
- Shull, J. M., et al. 2000, *ApJ*, 538, L13
- Simcoe, R. A., Sargent, W. L. W., & Rauch, M. 2004, *ApJ*, 606, 92
- Songaila, A., & Cowie, L. L. 1996, *AJ*, 112, 335
- Steidel, C. C. 1995, in *QSO Absorption Lines*, ed. G. Meylen (Garching: Springer), 139
- . 1998, in *ASP Conf. Ser. 136, Galactic Halos*, ed. D. Zaritsky (San Francisco: ASP), 167
- Steidel, C. C., Dickinson, M., Meyer, D. M., Adelberger, K. L., & Sembach, K. R. 1997, *ApJ*, 480, 568
- Steidel, C. C., Giavalisco, M., Dickinson, M., & Adelberger, K. L. 1996a, *AJ*, 112, 352
- Steidel, C. C., Giavalisco, M., Pettini, M., Dickinson, M., & Adelberger, K. L. 1996b, *ApJ*, 462, L17
- Tantalo, R., Chiosi, C., Bressen, A., & Fagotto, F. 1996, *A&A*, 311, 361
- Telfer, R. C., Kriss, G. A., Zheng, W., Davidsen, A. F., & Tytler, D. 2002, *ApJ*, 579, 500
- Tonry, J. L., Blakeslee, J. P., Ajhar, E. A., & Dressler, A. 2000, *ApJ*, 530, 625
- Tripp, T. M., Lu, L., & Savage, B. D. 1998, *ApJ*, 508, 200
- Tripp, T. M., et al. 2002, *ApJ*, 575, 697 (T2002)
- Tumlinson, J., Giroux, M. L., Shull, J. M., & Stocke, J. T. 1999, *AJ*, 118, 2148
- Turnshek, D. A., Rao, S. M., & Nestor, D. B. 2002, in *Extragalactic Gas at Low Redshift*, ed. J. Mulchaey & J. Stocke (San Francisco: ASP), 42
- Tyson, J. A., & Seitzer, P. 1988, *ApJ*, 335, 552
- van Gorkom, J. H., Bahcall, J. N., Jannuzi, B. T., & Schneider, D. P. 1993, *AJ*, 106, 2213
- Weymann, R. J., Carswell, R. F., & Smith, M. G. 1981, *ARA&A*, 19, 41
- Weymann, R., Rauch, M., Williams, R., Morris, S., & Heap, S. 1995, *ApJ*, 438, 650
- Weymann, R., et al. 1998, *ApJ*, 506, 1
- Womble, D. S., Sargent, W. L. W., & Lyons, R. S. 1996, in *Cold Gas at High Redshift*, ed. M. N. Bremer, P. P. van der Werf, H. J. A. Röttgering, & C. L. Carilli (Dordrecht: Kluwer), 249
- Worthey, G. 1994, *ApJS*, 95, 107
- Yee, H. K. C. 1991, *PASP*, 103, 396
- Young, P., Sargent, W. L. W., & Bokserberg, A. 1982, *ApJS*, 48, 455
- Zabludoff, A. I., Zaritsky, D., Lin, H., Tucker, D., Hashimoto, Y., Shectman, S. A., Oemler, A., & Kirshner, R. P. 1996, *ApJ*, 466, 104